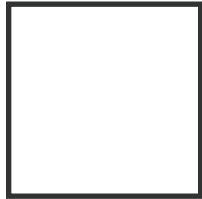


----- XS
----- S
----- M
----- L
----- XL
----- XXL



1" x 1"
TEST SQUARE

tied up top



US LETTER FORMAT

#TIEDUPTOP

#SEWANDTELLPATTERNS



SEWANDTELLPATTERNS.COM

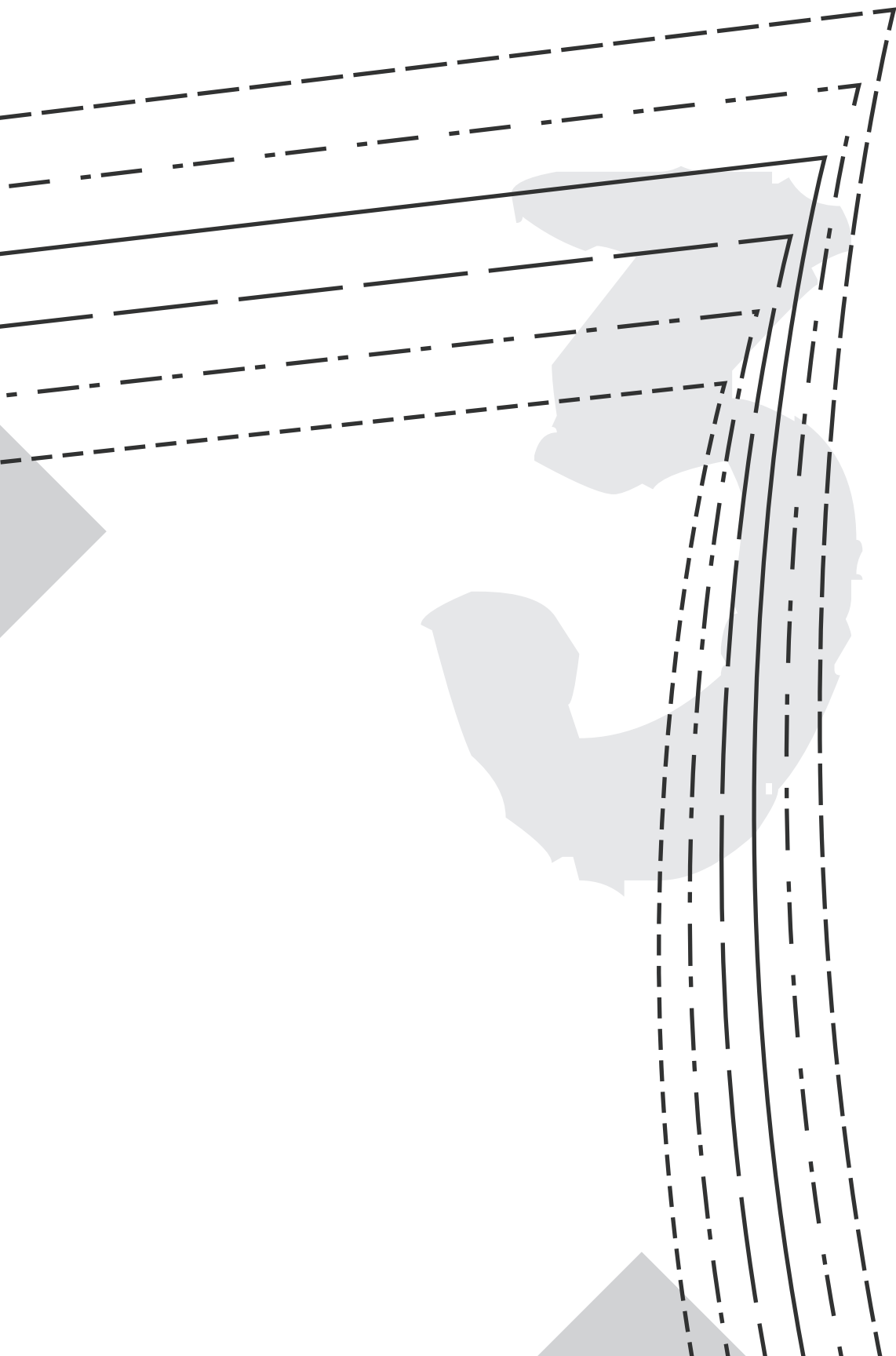


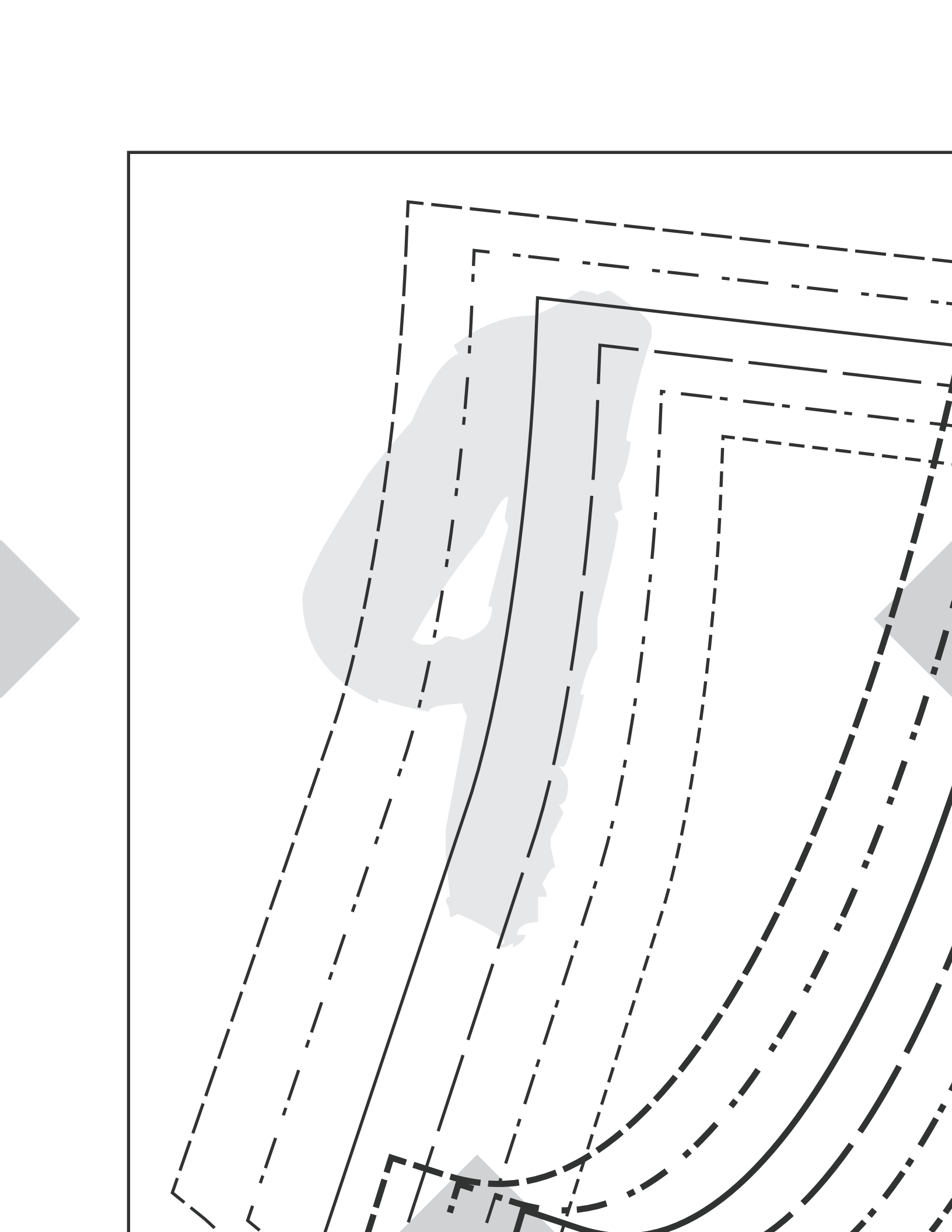
tied up top SIMPLE PLACKET

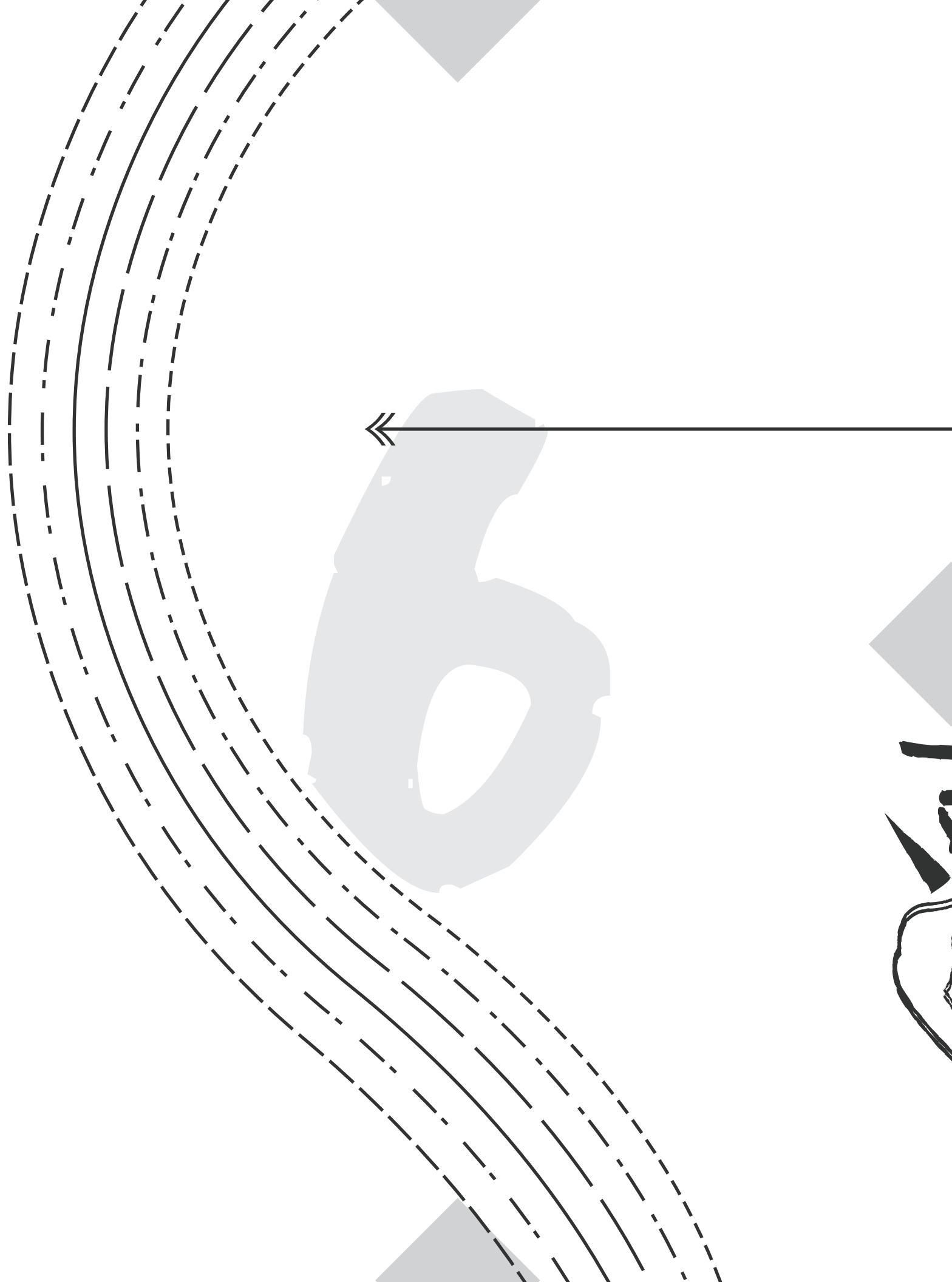


Cut 2











Tied up top

#TIEDUPTOP

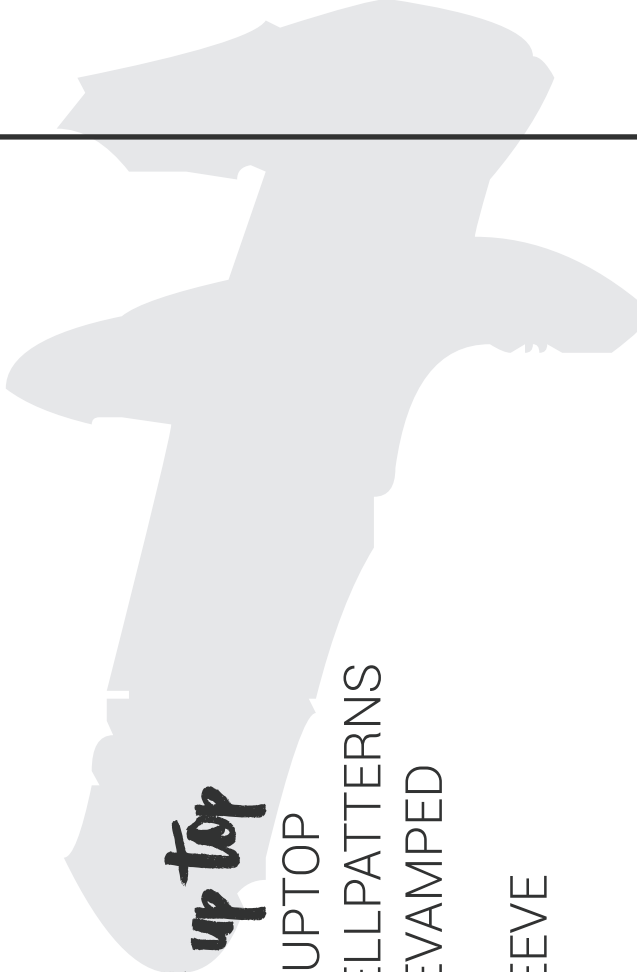
#SEWANDTELLPATTERNS

#SEWREVAMPED

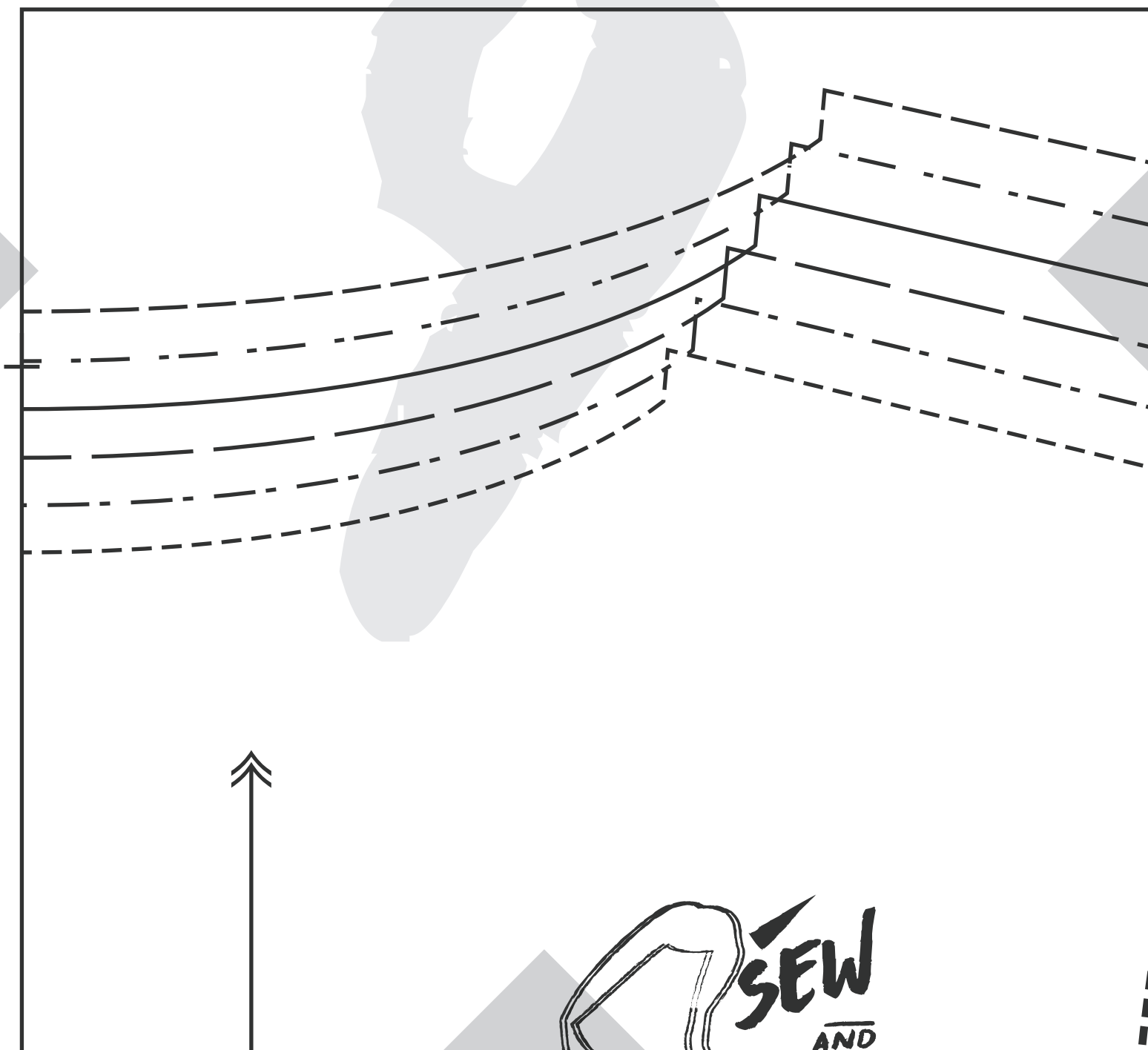
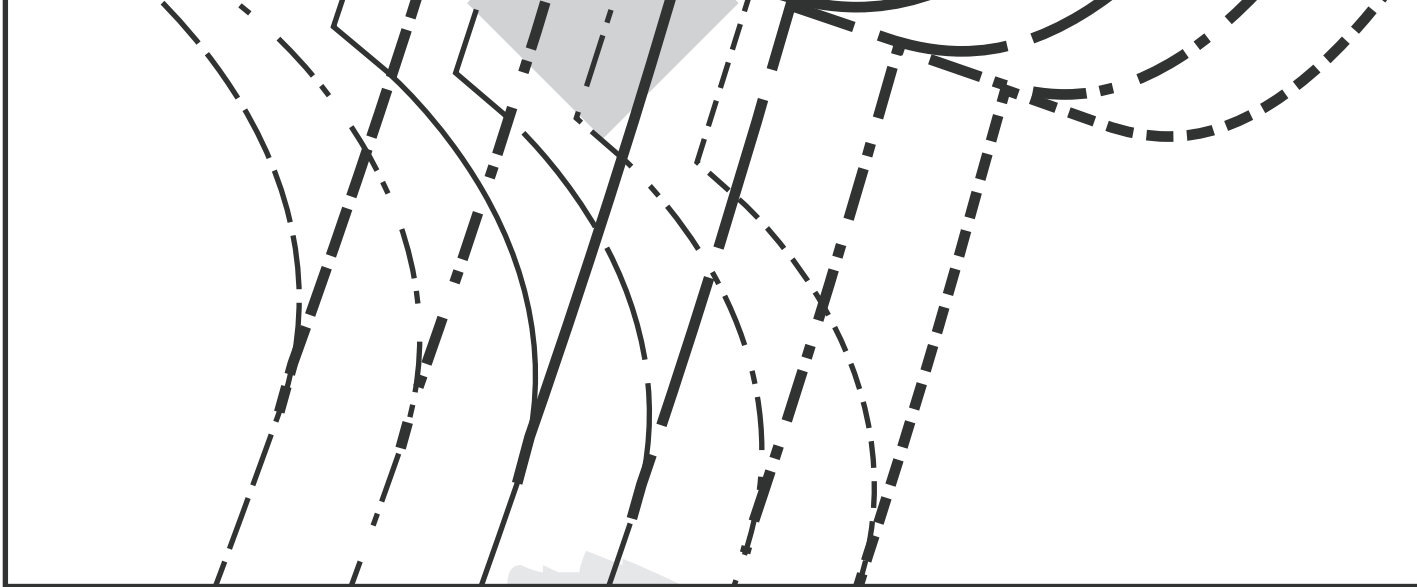
SLEEVE

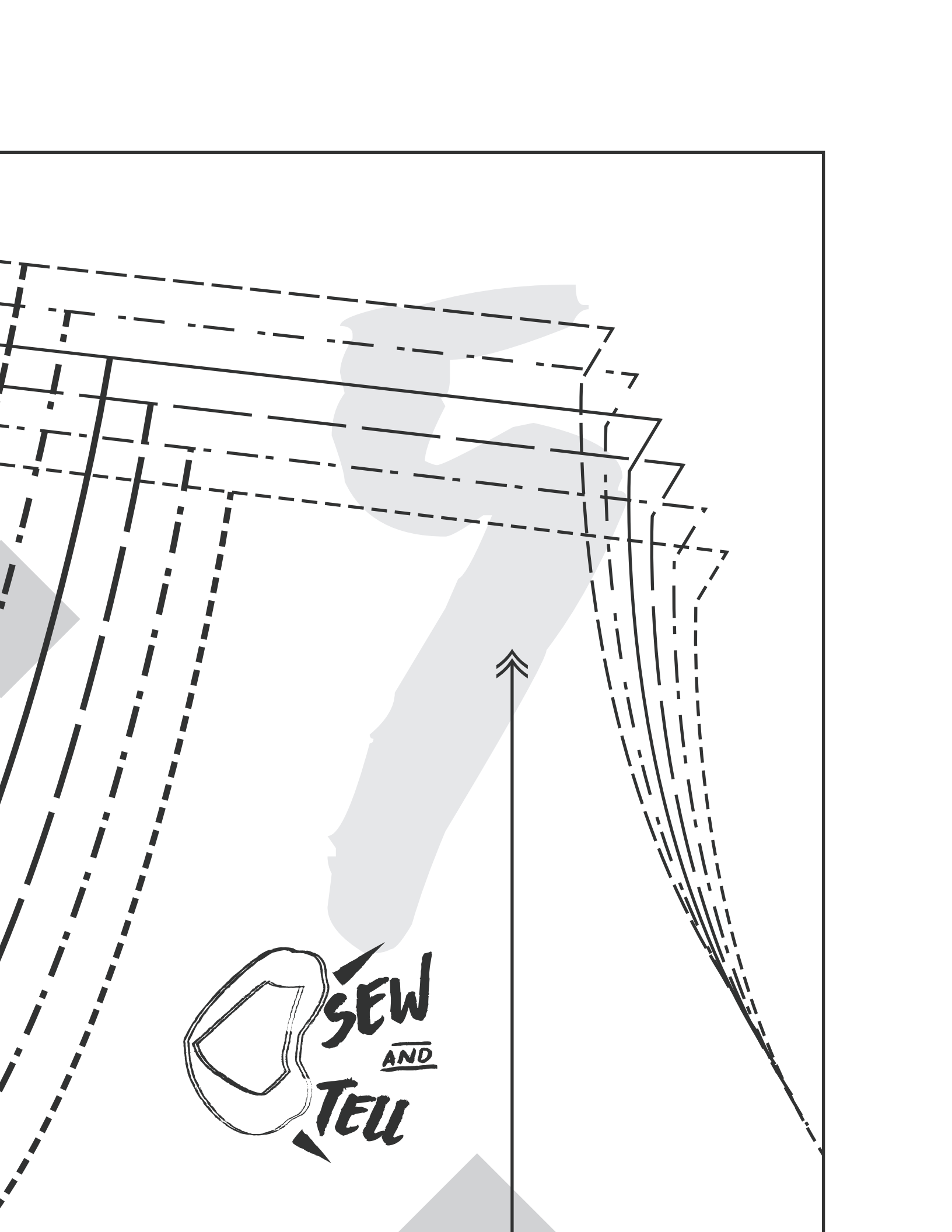


Cut 2









SEW
AND
TELL

tied up top

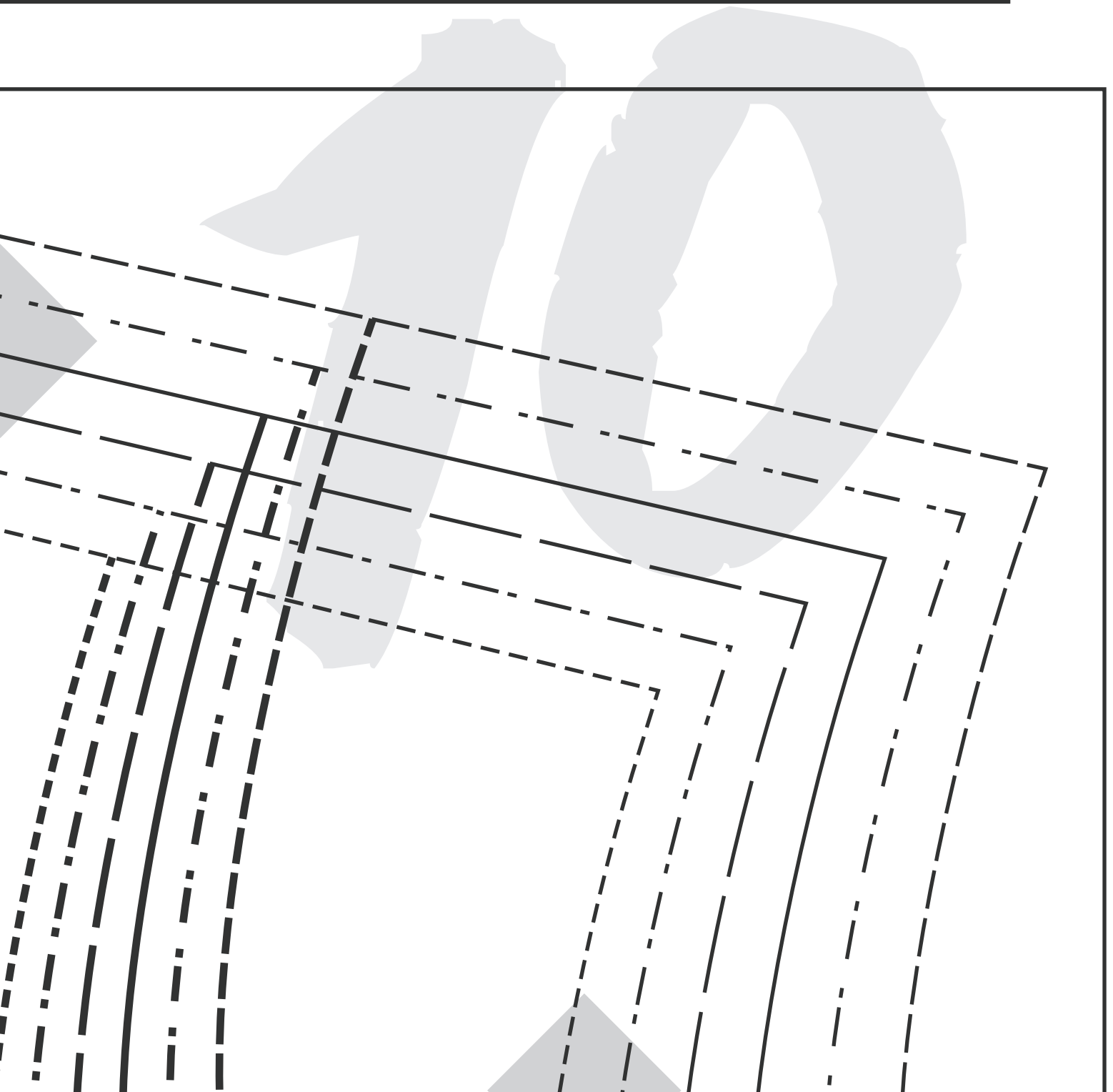
#TIEDUPTOP
#SEWANDTELLPATTERNS
#SEWREVAMPED

SIDE FRONT



LAY THIS ON TOP
OF YOUR EXISTING
TIED UP TOP
SIDE FRONT PATTERN
PIECE.

USE ARMHOLE
LINES TO CUT FOR THE
FALL SLEEVE HACK.





FOLD LINE

FALL SLEEVE HACK!

tied up top

#TIEDUPTOP

#SEWANDTELLPATTERNS

#SEWREVAMPED

SLEEVE CUFF



Cut 2



ALL PATTERNS, PHOTOS, AND INFORMATION CONTAINED IN THIS DOCUMENT ARE THE
PROPERTY OF SEW & TELL, ALL RIGHTS RESERVED.

REPRODUCTION AND REDISTRIBUTION BY ANY MEANS ARE NOT PERMITTED.
THE *TIED UP TOP* IS INTENDED AND LICENSED FOR PERSONAL USE ONLY.

SALES OF PRODUCTS PRODUCED USING THIS PATTERN CAN ONLY BE DONE BY PURCHASING
A LIMITED PRODUCTION LICENSE.

PLEASE CONTACT JENN BARRON AT INFO@SEWANDTELLPATTERNS.COM
FOR MORE INFORMATION



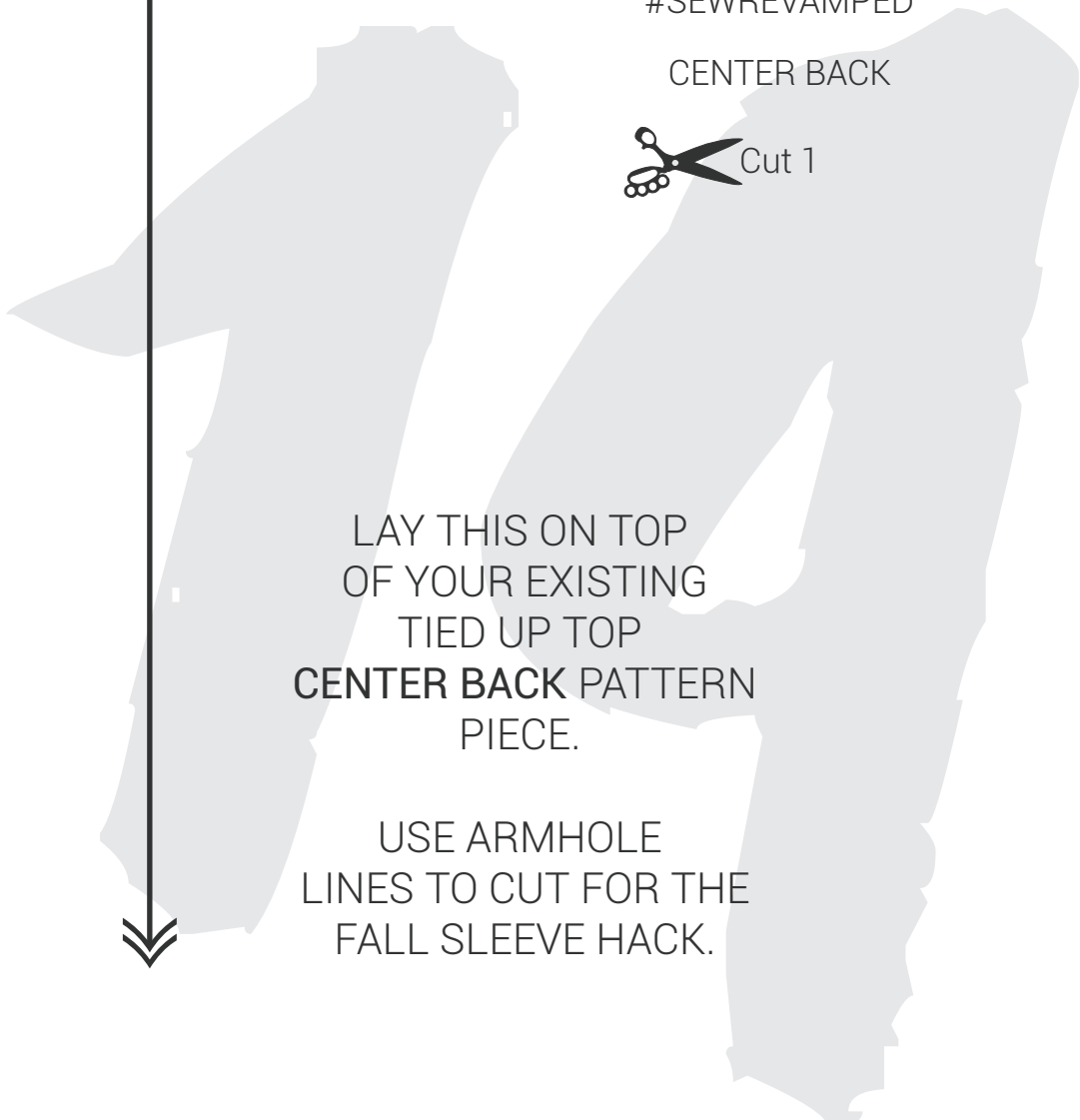
tied up top

#TIEDUPTOP

#SEWANDTELLPATTERNS

#SEWREVAMPED

CENTER BACK



LAY THIS ON TOP
OF YOUR EXISTING
TIED UP TOP
CENTER BACK PATTERN
PIECE.

USE ARMHOLE
LINES TO CUT FOR THE
FALL SLEEVE HACK.

