



Hello, I'm Jenn.

A persistent self-starter with strong entrepreneurship skills and a knack for making great things. The song "*She's Crafty*" was written with me in mind. My obsession for creating artsy things has me tackling any new challenge that comes my way.

Find Me:

2609 W Cortez
Chicago, IL

636.448.2000

jennbarron.chicago@gmail.com



- Branding & Logo Design
 - Fine Art
- Technical Illustration & Layout
- Fashion Design & Art Direction
 - Original Print Design
 - Bridal & Custom Sewing
- Graphic Design and Print
 - Website Design
 - Fun Projects



LOGO DESIGN

FONT STYLES

VANTY (ALL CAPS)

Vanity (BOLD NARROW)

American Typewriter

GRAPHIC STYLES

Lips

The Queen

Silhouette

COLOR PALLET

Rouge

Rosé

Noir

Reine Des Coeurs

MOOD INSPIRATION

LOGO DESIGN

FONT STYLES

ANDERS

Simplifica

gemstone

COLOR PALLET

MOOD INSPIRATION

DESIGN IDENTITIES

LOGO DESIGN

FONT STYLES

ASPHALTS DISPLAY

asphalts brush

ROBO LIGHT (ALL CAPS)

GRAPHIC STYLES

NUCKLE SCISSORS

TRADITIONAL

JUST LIPS

OUTLINE

COLOR PALLET

PINKY

ROSIE

MIDNIGHT

PRINT

MOOD INSPIRATION

LOGO DESIGN

FONT STYLES

Autumn Chant

Acumin Pro Wide Thin

GRAPHIC STYLES

Black & White

Sage

Eggplant

Quartz

COLOR PALLET

Quartz

Eggplant

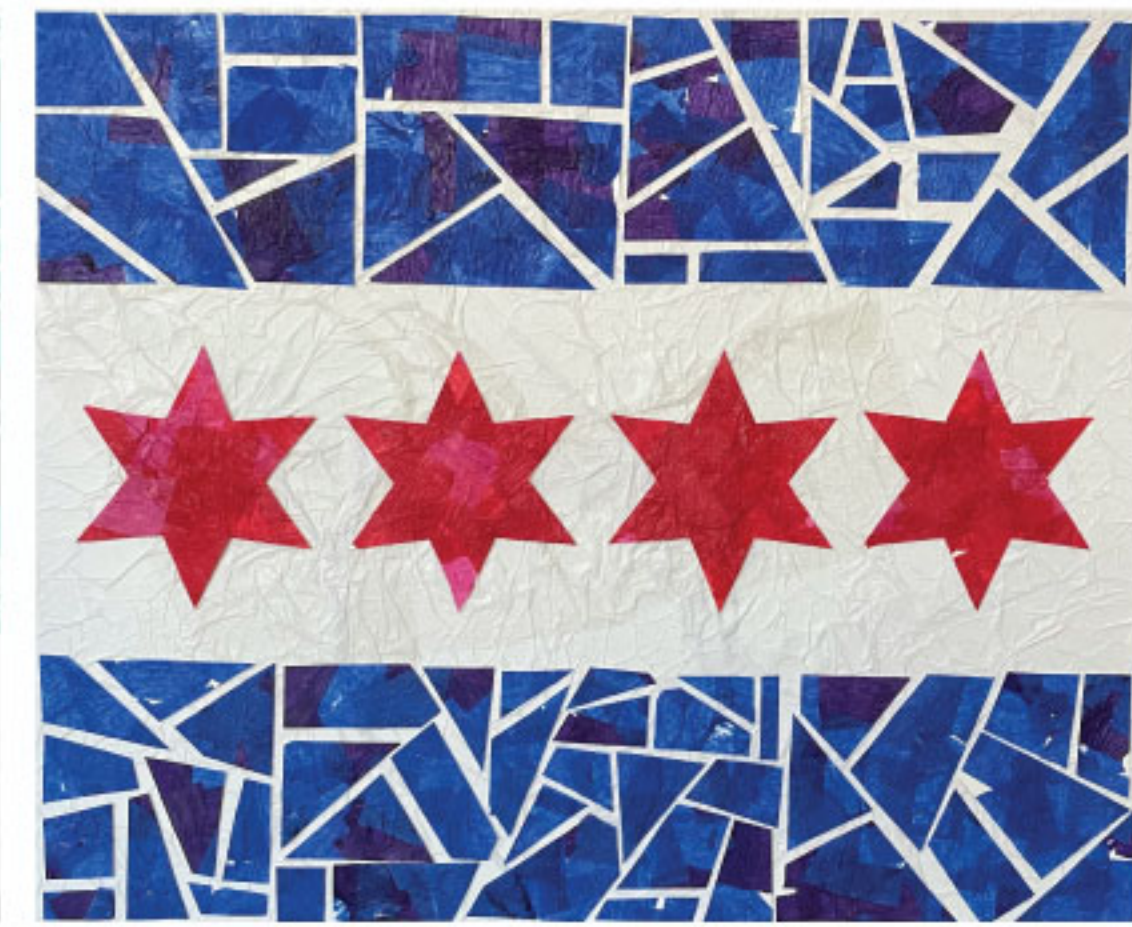
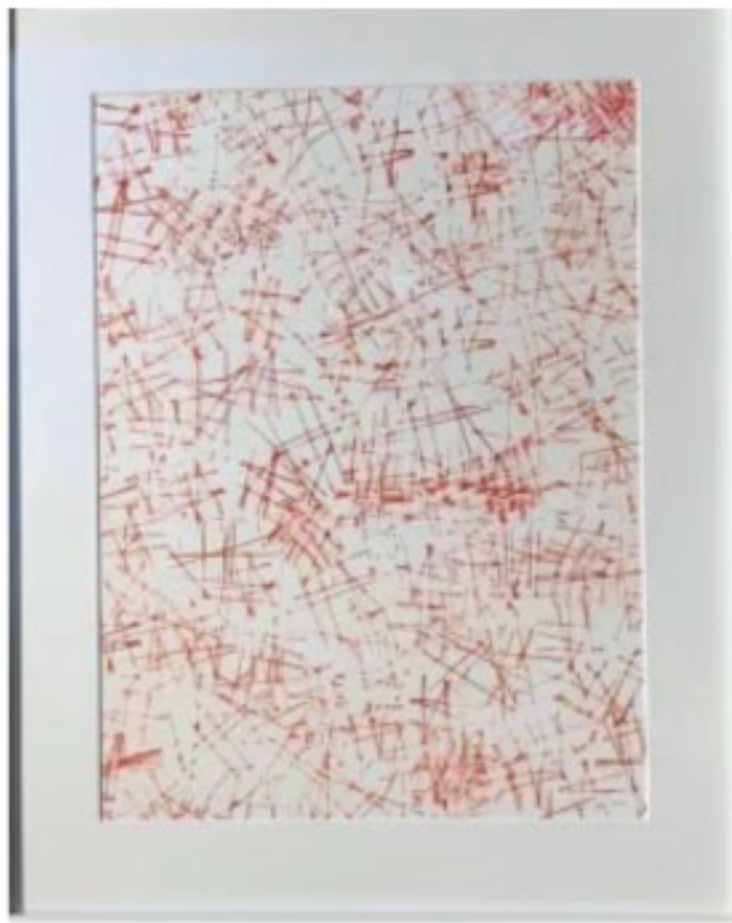
Sage

Halftone

MOOD INSPIRATION

Branding & Logo Design





Concept to creation for annual school Art Auction using student-produced assets

Fine Art

.....



10) Time to add the Collar Facing, this will go the length of the Bodice and the front of the Shorts/Pants and ends at the front crotch seam.

Working with one side at a time, place the Collar Facing, RST, along the long front edge of the romper or jumper. Stitch the full length of the seam, stopping right at the clipped edge and stitching from step 9. Repeat for the other side.

Quick Note: You'll want to add some seam finishing along the opposite edge of the Collar Facing. Some seam finishing suggestions are on page 18.

11) Once again, hop over to the ironing board. Press the Collar facing and seam allowance away from the front along the seam. (A)

In your pregame, you likely already pressed along the designated fold line, but just in case, give this a press again. This is now the button extension. (B)

12) To finish the bottom edge of this button extension you will need to place one atop the other. Traditionally, women's button blouses you would put the left on top and men's would be the right. Meaning, there are "rules" here, but, IDGAF what side you want to choose, I'll love you no matter what.

So pick a side and place that extension atop the other and tuck them to the inside. (A)

Flip that little flap towards the inside as well. (B)

Head to the inside and stitch along the edge of the Extension and the Shorts/Pants flap, stopping right at the stitched and clipped corners. (C)

Just a friendly reminder, you might want some seam finishing along the Button Extension's bottom edge

© Sew & Tell Patterns, All Rights Reserved

26

LOVE THE WILLO

PATTERN

View A: Romper

View B: Jumpsuit

View C: Blouse

FIT MODIFICATION

Our bodies are amazing and different, that means our measurements are incredibly unique. You might need to make some adjustments to the Willo Pattern for your best fit. Here are a few suggestions you might try.

FULL CHEST ADJUSTMENT:
The Willo has been drafted with a C/D cup or a 3-4" difference between high and full bust. Depending on your measured cup size, you might choose a Full Chest Adjustment is needed.

Draw three lines radiating from an approximate bust point to the mid-arms, a horizontal line to the side seam and down to the notch along the waist line.

Our along all lines, stopping just before the armhole and side seam edges.

Isolating from the armhole point, push out both side pieces.

For every 1" you push out, you will gain approximately 1/2" per side. This measures to adding 1" to your full chest circumference.

Use the cut lines at the waist notch as the points to measure how much you spread.

Keeping the armhole piece in place, rotate the bottom side piece from the side seam point.

Shift the waist notch point back towards its original place.

This should not match up but hit slightly above where it was before.

Reconnect the waist notch with a new curved line. Smooth the armhole and round side seams.

Reconnect your notch, keeping it right where it started at the cut line of the main piece.

© Sew & Tell Patterns, All Rights Reserved

13



Lily & Migs Resort Collection 2014

Plan Your Getaway.

Vacation. Don't be shy. Travel to another state, or another state of mind. Winter is too long and the cold is just plain old.

Lily & Migs' Resort 2014 Collection is playful and effortlessly glamorous. So it doesn't matter where you go to escape the winter. Slip on our luxurious knits or bright prints and slip away.

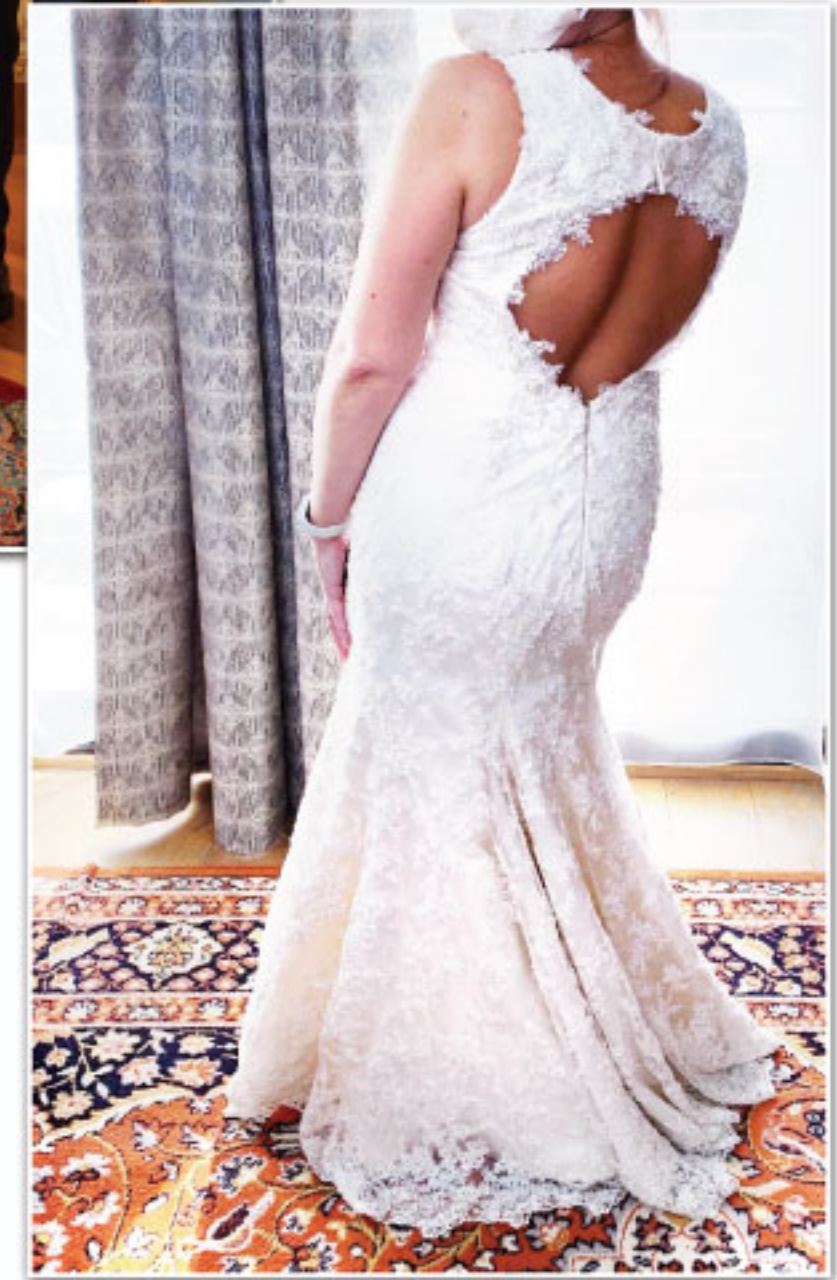




Original Print Design

.....

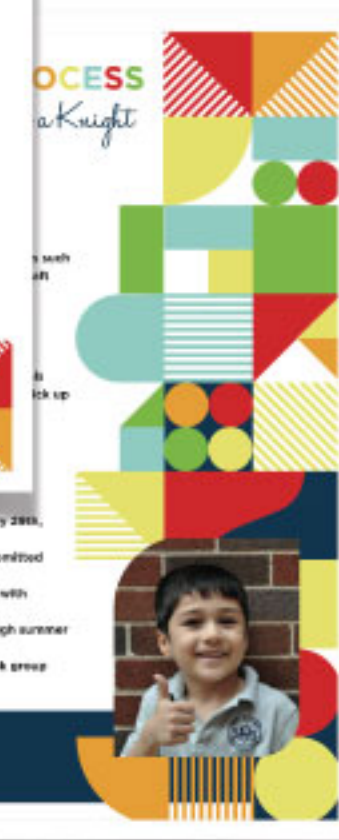




Bridal & Custom Sewing

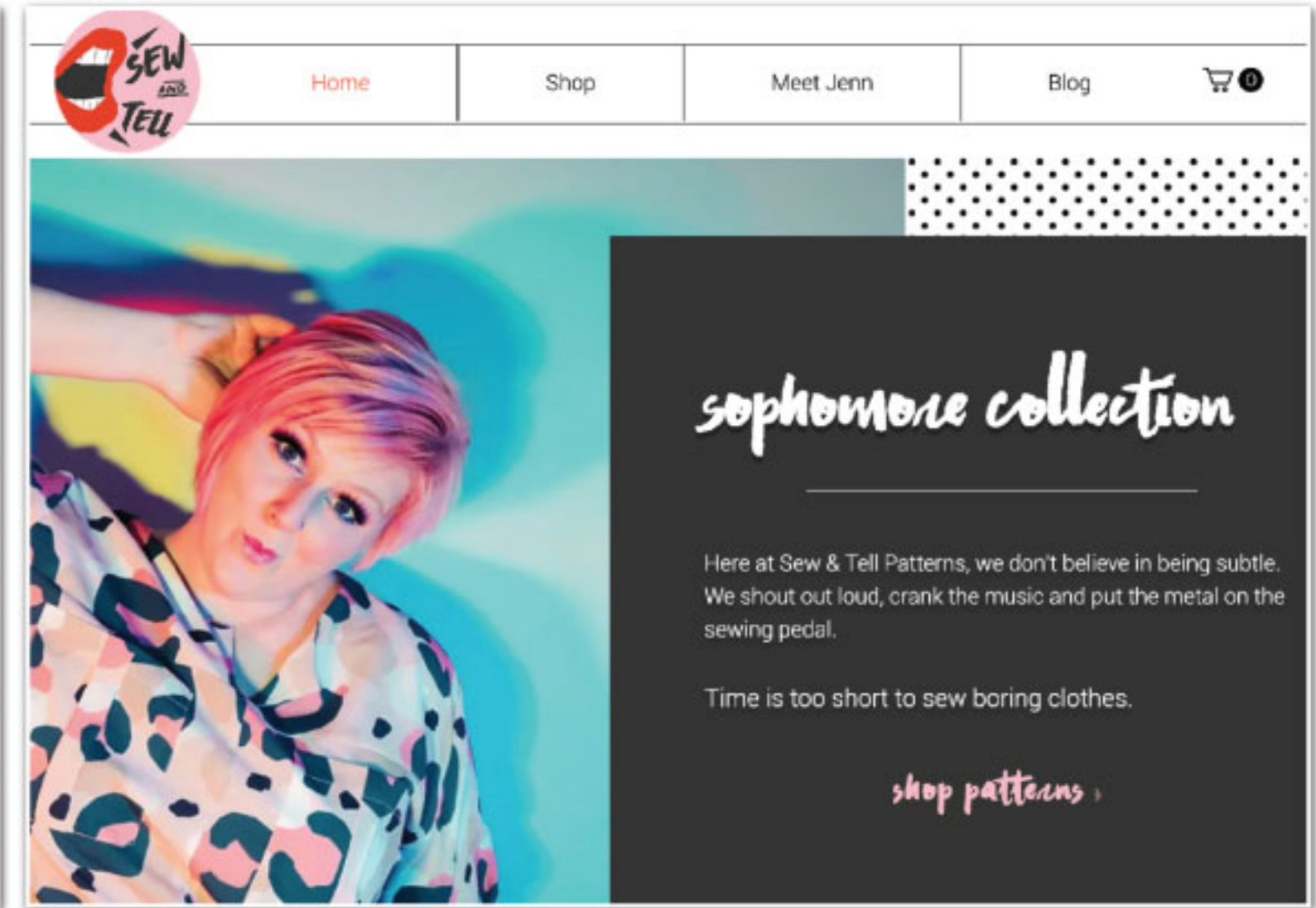
.....





Graphics & Print





Website Design

.....





badasscrossstitch

Rita't Quilt a community project
coordinated with Shannon
Downey of Badass Cross Stitch



Fun Projects

.....

